

4.1.1 The institution has adequate facilities for teaching – learning, viz., classrooms, laboratories, computing equipment, etc.

Class Rooms, Seminar Hall and Tutorial Room

Spacious, well-lit and well-ventilated 6 classrooms and 1 Seminar Hall with comfortable seating arrangement are available for smooth conduct of B. Pharm. and M. Pharm theory sessions. Besides the conventional teaching aids, classrooms are also equipped with state-of-the-art audiovisual technology viz. Digital smart board, LCD projectors and Over Head Projectors, thus stepping up the teaching-learning experience to next higher level. Well-thought positioning of aisle in the classrooms ensures proper interaction between teacher and students.



Seminar Hall



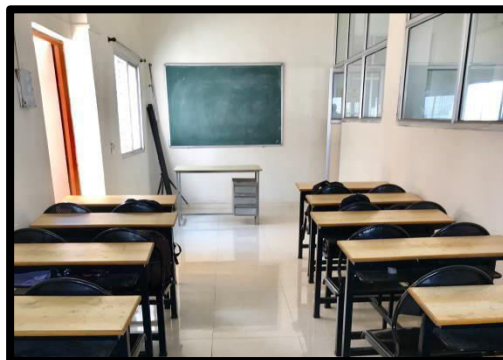
Digital Smart Board/LCD



Class Room

Tutorial Room

Separate tutorial room is available for conducting tutorial classes as a remedial measure to improve academic performance of slow-learners. Tutorial classes are conducted with the aid of topic specific charts, models, and audio-visuais. Critical topics are re-explained so that students can comprehend difficult topics easily.



Laboratories

Institute has adequate number of well-designed and properly-maintained laboratories as per statutory requirements. There are 12 laboratories for UG and 4 laboratories for PG courses for smooth conduct of regular practicals as per the curriculum design as well as the research work to be carried out by students. All the laboratories are well equipped with provisions of safety aids such as fire extinguisher, first aid box and display of safety instructions.



Central Instrumentation Room and Machine Room

Equipped with highly-sophisticated instruments and provision of power back-up, air-conditioned Central Instrumentation Room and Machine Room serves as the core units nurturing research culture amongst students and faculty members.



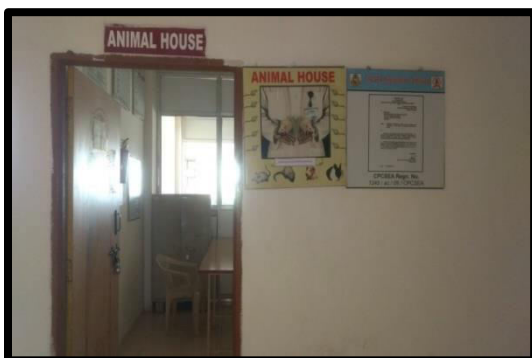
Computer Room

Institute has well-furnished Computer room and Language Laboratory with adequately configured computers along with other IT facilities viz. printer, scanner and multimedia systems. High-speed Internet facility is available to students and faculty to access information resources available across the globe.



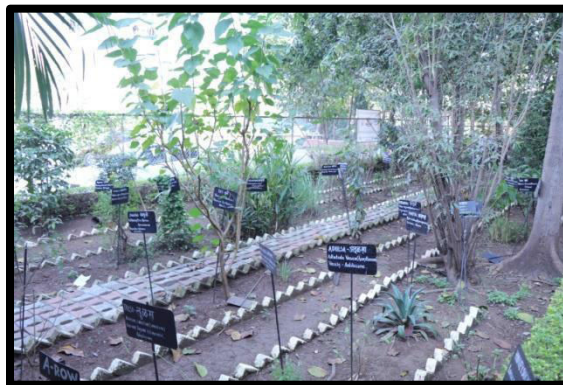
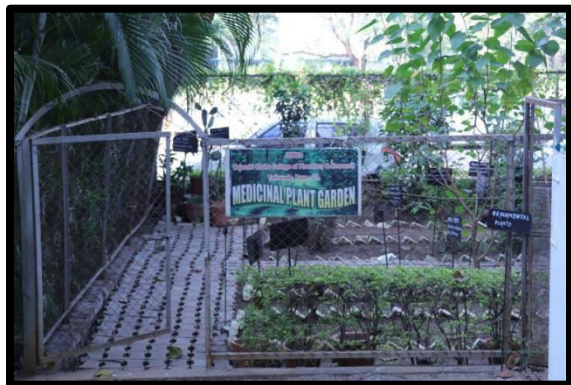
Animal House

Institute hosts an animal house (Area: 75 Sq. mts), well-maintained as per CPCSEA guidelines and with the provision available for air-conditioning. Institutional Animal Ethical Committee (IAEC) is already in place as per CPCSEA requirements.



Medicinal Plant Garden

Medicinal plant garden, situated adjacent to institution building, aids in teaching and research. The total area of the medicinal plant garden is 1250 Square feet. The boundary of the garden is properly demarcated. Different varieties of plants are available in the medicinal plant garden like herbs, shrubs, trees, xerophytes, perennial plants, plants growing under shade etc.



Library

Institute's library, the resource hub for knowledge, has a vast collection of books, journals, magazines and periodicals. Separate reading room is available for undergraduate, postgraduate students and teachers.

Separate e-library is also available with facilities such as subscription of e-journals (Bentham pharmacy and Science Direct), e-books, National Digital Library and various memberships like British library, National Chemical Laboratory library, Jaykar library Savitribai Phule Pune University, Pune.

Old volumes and issues of the hard copy of the journals have been hard bound and are available to students for reference.

Library has facilities such as Autolib software and OPAC (Online Public Access Catalogue) which is used by students & faculty for search of books by title/ author name etc.

Central Library of JSPM is also available 24x7 for students.

Collections in Library- At a glance

Books	Titles:	1935
	Volumes:	7721
Theses:		104
Journals:		National: 16
		International: 16
		Periodicals/magazines: 10
CDs		130
E-journals		Science Direct- 70 Bentham Pharmacy- 23
E-books		1534



Reading Room



Stacking Area



Reference Section



E-library

Campus facilities

Hostel Accommodation

Boys and Girls hostels are available at campus level. The hostels are very much secured. All the facilities are very close to the hostels. Rooms with attached bathrooms and conducive environment for study are provided.

Hostel Facility

Hostels Type	No. of rooms	Total No. of Students accommodated
Boys	127	509
Girls	129	304

Facilities provided in Hostel

- Recreation facilities
- Fully equipped gymnasium
- Computer facility including Internet access with broadband connection and Wi-Fi facility
- Medical facilities: with provision of sick room and Ambulance for medical emergency.
- Medical help desk is available 24 hrs in campus for hostel students
- Library: The hostel buildings have provision for reading and studying (magazines, newspapers, periodicals, etc.). Through Wi-Fi, students can download E-journal papers from institute accession.
- Hygiene facilities: Cleanliness of all facilities is maintained by in-house housekeeping staff.
- Security: Separate rector and warden for both the boys and girls hostels. • Security with 48 CCTV's Cameras, wireless facility and advanced • techniques are provided for college and hostels separately.



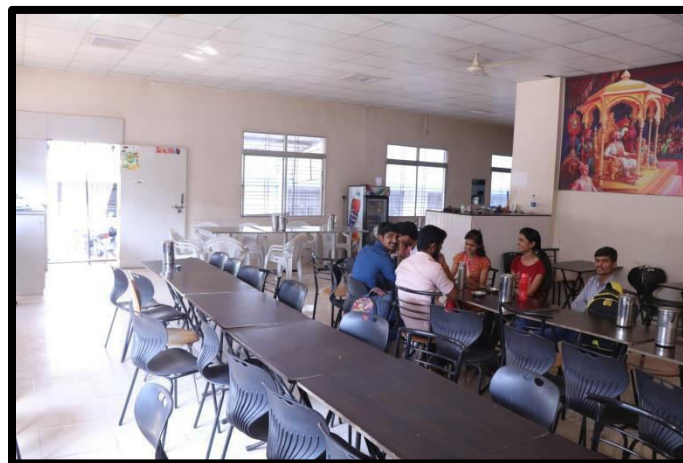
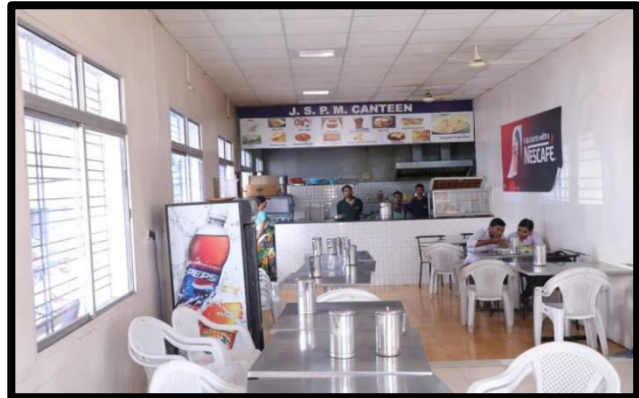
Boys Hostel



Girls hostel

Canteen

Institution has good canteen facility which provides healthy and hygienic food items. Mess facility also available.



Cafeteria

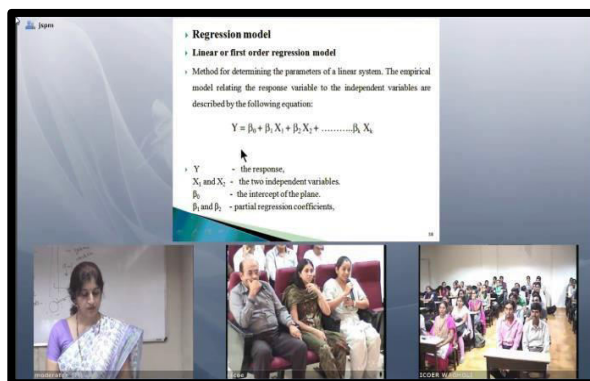
Auditorium

Institution hosts a well-maintained and air-conditioned auditorium admeasuring250 sq. mt with seating arrangement for 500 headcount. Furnished with high quality audio-visual facility and power backup provision, auditorium can be used for organizing seminars, workshops, conferences, guest lectures as well as extra-curricular activities.



Videoconferencing Facility

Institute has video conferencing facility, equipped with 4 Mbps dedicated line, 72 inches LCD T.V., movable camera and P.A. system. VC facility promotes collaborative studies and interdisciplinary research. The expert lectures delivered at central place can be broadcasted simultaneously across all the campuses of JSPM. Students from RSCOPR can take the benefit of this VC net facility by interacting with subject expertise.



Regression model

- Linear or first order regression model
- Method for determining the parameters of a linear system. The empirical model relating the response variable to the independent variables are described by the following equation:

$$Y = \beta_0 + \beta_1 X_1 + \beta_2 X_2 + \dots + \beta_n X_n$$

- Y - the response,
- X_1 and X_2 - the two independent variables.
- β_0 - the intercept of the plane.
- β_1 and β_2 - partial regression coefficients.

Bank /ATM

Institute provides Bank and ATM facility within the campus.



Parking

There is an ample parking space in the campus.



Transport

Institution offers transport facility to cater the need of staff and students.



Medical Facility

Medical help desk is available 24 hrs in campus with provision of sick room and Ambulance for medical emergency.



CCTV / Security

Institution is secured through CCTV surveillance. Security with 48 CCTV's Cameras



Wi-Fi

The campus is having Wi-Fi facility.